

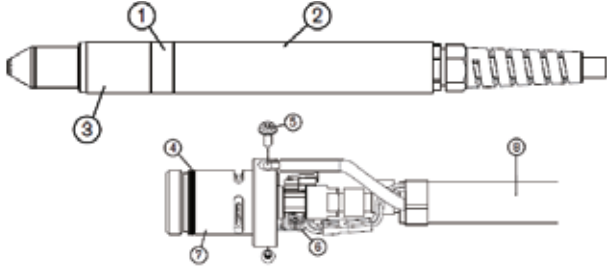


Powermax 125

Consumables



Duramax Hyamp 180° full-length machine torch replacement parts



Mechanized shielded 105 A/125 A consumables



Mechanized shielded 45 A and 65 A consumables



Mechanized shielded with ohmic 105 A/125 A consumables



Mechanized shielded with ohmic 45 A and 65 A consumables



FineCut shielded consumables



- Mechanized shielded 105 A/125 A consumables
- Mechanized shielded 45 A/65 A consumables
- Mechanized shielded with ohmic 105 A/125 A consumables
- Mechanized shielded with ohmic 45A/65A consumables
- FineCut shielded consumables

Duramax Hyamp 180° full-length machine torch replacement parts

Part Number	Description
059519*	Duramax Hyamp 180° full-length machine torch assembly with 4.6 m (15 feet) lead
059520*	Duramax Hyamp 180° full-length machine torch assembly with 7.6 m (25 feet) lead
059521*	Duramax Hyamp 180° full-length machine torch assembly with 10.7 m (35 feet) lead
059522*	Duramax Hyamp 180° full-length machine torch assembly with 15 m (50 feet) lead
059523*	Duramax Hyamp 180° full-length machine torch assembly with 23 m (75 feet) lead
1	428248 Kit: Duramax Hyamp 180° machine torch coupler
2	428144 Kit: Duramax Hyamp 180° full-length machine torch positioning sleeve
3	428145 Kit: Duramax Hyamp 180° machine torch mounting sleeve
4	428253 Kit: Duramax Hyamp O-ring replacement (5)
5	075696 Pilot terminal screw
6	228720 Kit: Duramax/Hyamp/MRT 180° machine torch cap-sensor switch replacement
7	428147 Kit: Duramax Hyamp 180° machine torch main body replacement
8	428149 Kit: Duramax Hyamp 180° machine torch lead replacement, 4.6 m (15 feet)
8	428150 Kit: Duramax Hyamp 180° machine torch lead replacement, 7.6 m (25 feet)
8	428151 Kit: Duramax Hyamp 180° machine torch lead replacement, 10.7 m (35 feet)
8	428152 Kit: Duramax Hyamp 180° machine torch lead replacement, 15 m (50 feet)
8	428153 Kit: Duramax Hyamp 180° machine torch lead replacement, 23 m (75 feet)
428260	Kit: Duramax and Duramax Hyamp torch quick disconnect repair (lead side)