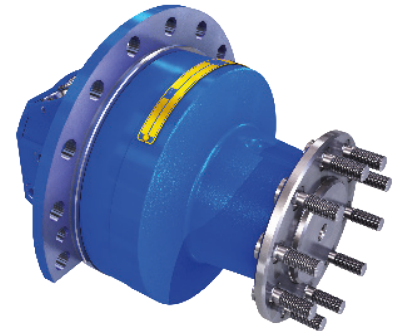
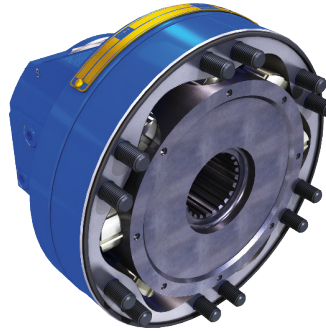
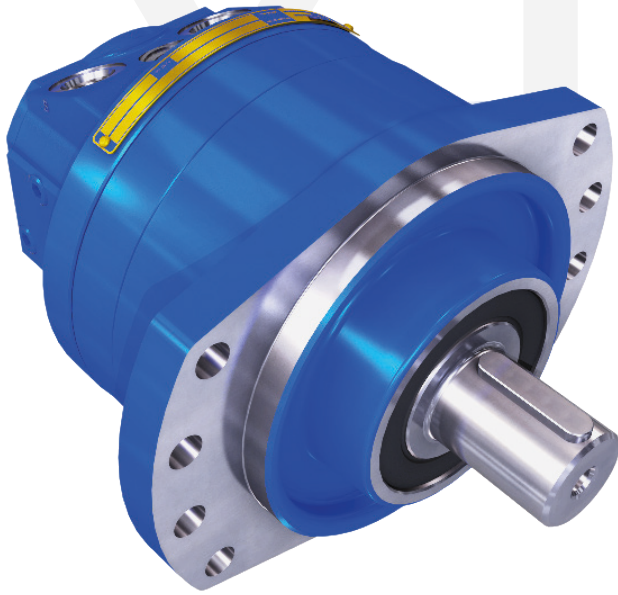




XJ range



Compact, modular design, radial piston, multi-lobed, CAM motor

- Two speed options
- Dynamic and parking brake options
- Freewheel capability
- Radial piston, multi-stroke CAM design
- Displacement 376cc—8092 cc/rev
- Continuous pressure of 350bar

XJ motor data

FrameSize		XJ05						
Frame Diameter 225mm	Approx Weight. 44kg	Nominal Displacement (cc/rev)	380	430	470	520	570	
		Geometric Displacement (cc/rev)	376	425	472	519	565	
		Specific Torque (Nm/bar)	6.0	6.8	7.5	8.3	9.0	
		Max Pressure (bar)*	450	450	450	450	450	
		Max Cont. Speed - 1 Displacement (rpm)	250	235	240	220	200	
		Max Cont. Speed - 2 Displacement (rpm)	250	235	240	220	200	
		Max Cont. Power (kW)	29	29	29	29	29	
FrameSize		XJ08						
Frame Diameter 263mm	Approx Weight. 60kg	Nominal Displacement (cc/rev)	460	600	730	870	1000	1150
		coming soon						
FrameSize		XJ12						
Frame Diameter 295mm	Approx Weight. 94kg	Nominal Displacement (cc/rev)	730	890	1050	1200	1350	1540
		coming soon						
FrameSize		XJ20						
Frame Diameter 338mm	Approx Weight. 177kg	Nominal Displacement (cc/rev)	1670	1880	2100	2300	2500	
		Geometric Displacement (cc/rev)	1666	1884	2092	2301	2505	
		Specific Torque (Nm/bar)	26.5	30.0	33.3	36.6	39.9	
		Max Pressure (bar)*	450	450	450	450	450	
		Max Cont. Speed - 1 Displacement (rpm)	125	115	100	90	85	
		Max Cont. Speed - 2 Displacement (rpm)	150	135	125	110	100	
		Max Cont. Power (kW)	70	70	70	70	70	
FrameSize		XJ40						
Frame Diameter 338mm	Approx Weight. 182kg	Nominal Displacement (cc/rev)	3330	3770	4180	4600	5010	
		Geometric Displacement (cc/rev)	3332	3768	4184	4602	5010	
		Specific Torque (Nm/bar)	53.0	60.0	66.6	73.2	79.7	
		Max Pressure (bar)*	450	450	450	450	450	
		Max Cont. Speed - 1 Displacement (rpm)	150	145	140	120	110	
		Max Cont. Speed - 2 Displacement (rpm)	150	145	140	130	120	
		Max Cont. Power (kW)	110	110	110	110	110	

