



## THICKNESSER MACHINE

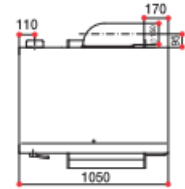
Model: SP 1 FORMULA



### TECHNICAL DATA: THICKNESSING PLANER

Working width	520MM
Worktable length	1000mm
Working height	250mm
Max cutting depth	8mm
Feed speed	5/8/12/18m/min
Worktable fitting lifting	•(o- no CE)
Exhaust hood diameter	150mm
Outfeed rubber roller	•
2 <sup>nd</sup> outfeed rubber roller	o
2 rollers on the worktable	o
1 <sup>st</sup> sectioned infeed roller	o
<b>Electrical Features</b>	
3X400V	•
5,5HP (4kW) – direct start)	-
7,5Hp (5,5kW) – YD manual start	•
10HP (7,5kW) – YD automatic start	o
Automatic star-delta start	o
• = standard o = optional	

SP1



# FORMULA

100% made in Italy

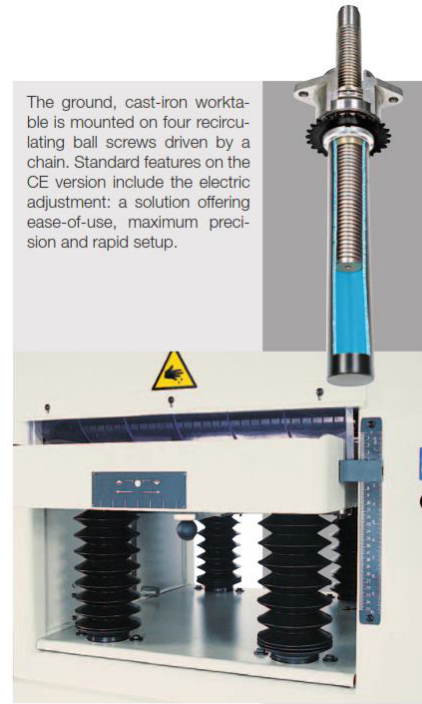


**MACHINE FEATURES:**



**Controls**

All the controls are in an ergonomic position on the front of the machine. The feed speed selector, the electric work height adjuster and the mechanical digital dimension read-out are all conveniently placed for the operator. In the non-CE model in the standard version the worktable is raised using a handwheel.



The ground, cast-iron worktable is mounted on four recirculating ball screws driven by a chain. Standard features on the CE version include the electric adjustment: a solution offering ease-of-use, maximum precision and rapid setup.

**MAIN OPTION AVAILABLE ON REQUEST:**



**The thicknesser worktable** can be fitted with **two rollers** to optimise workpiece feed and throughput.

Available on SP1, SP2, FS1, FS2



**Third feed roller**

This is a powered, rubber-coated roller designed to ensure perfect workpiece feed with any type of wood.

Available on SP1 and SP2



**Mortising unit:** it is equipped with a large-sized worktable with a precise horizontal, vertical and transversal movement.

Available on F1, F2, FS1, FS2

Worktable dimensions: 540x330 mm  
Strokes:  
X = 200 mm  
Y = 165 mm  
Z = 120 mm

**FORMULA**

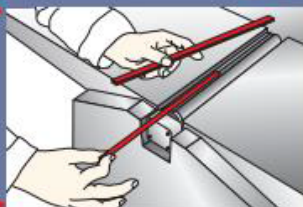
100% made in Italy



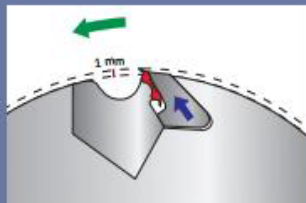
another feature guaranteeing top safety and machining precision. The Tersa system has no clamping screws. Changing the knives is therefore very quick and easy.



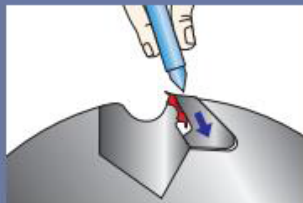
The innovative knives fixing system to the cutterblock eliminates the setting up times.



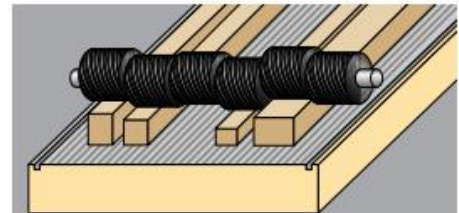
Easy cutterblock knives introduction.



Knives self-locking at the machine starting thanks to the centrifugal force. The automatic projection of all knives is perfectly adjusted.



Quick knives substitution by gibs unlocking.



**Sectioned steel roller**

A feed system is available to grant the simultaneous working of different thickness workpieces. It consists of a special sectioned steel roller in place of the infeed standard one.

Available on SP1, SP2, FS2

**FORMULA**

100% made in Italy