

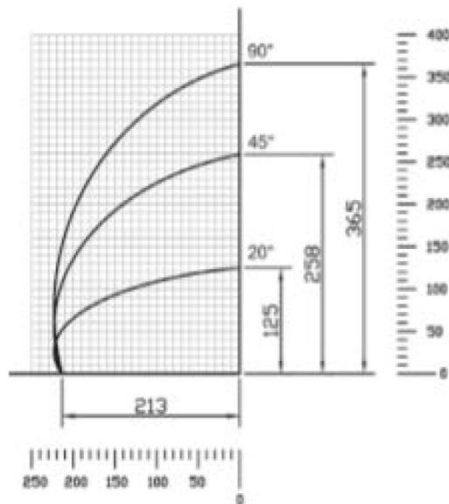


## SINGLE HEAD CUTTING OFF MACHINE

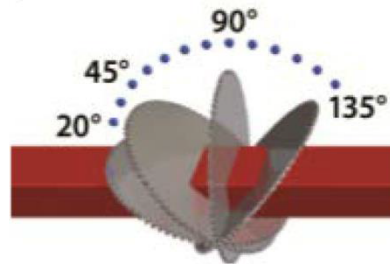
MODEL : FAST 600

### TECHNICAL DATA

- Single head cutting off machine with frontal blade movement.
- Pneumatic tilting of the head.
- Equipped with TCT saw blade  $\varnothing 600$  for FAST600, head tilting  $20^{\circ}/90^{\circ}/135^{\circ}$ .
- Three phase motor 5.5 HP for FAST600



Cutting Diagram (Tolerance +/- 3mm)



### STANDARD EQUIPMENT

- TCT Saw Blade  $\varnothing 600$
- Nr. 2 Horizontal Pneumatic Clamps
- Nr. 1 Vertical Pneumatic Clamp
- Air Filter
- Full Protection of the Blade
- Air Gun