



## GANTRY TYPE CNC PLASMA CUTTING MACHINE

MODEL : GSII - 4000



### TECHNICAL DATA :

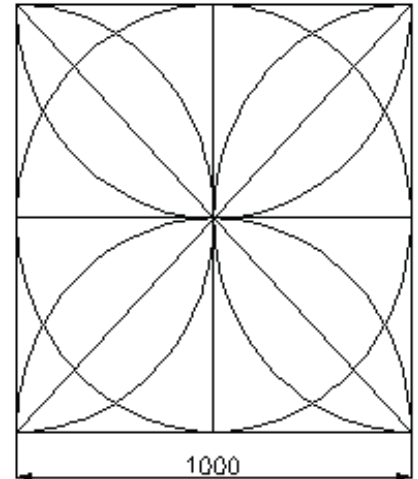
MACHINE BODY	Main Frame	Medium Gantry
	Machine Size (mm)	4000*14000mm
	Effective Cutting Area (mm)	3200*12000mm
	Optional Size :	Available
	Max. Travelling Speed (mm/min)	12000mm/min
	Cutting torch lifting distance	170mm
	Longitudinal position accuracy	± 0.2 mm/1000mm
	Longitudinal Repeatability	± 0.2 mm/1000mm
	Speed setting error	0
THC accuracy	±0.2mm	
CUTTING TORCH	Oxy-fuel cutting torch station number	1
	Oxy-fuel cutting torch number	1
	Oxy-fuel cutting thickness	6-150mm by 1 flame torch
	Oxy-fuel Torch height sensor	Yes, with capacitor sensor THC
	Oxy-fuel Torch Ignition system	Yes, Supplied with
	Plasma cutting torch number	1
	Plasma Torch height sensor	HUGONG brand ARC voltage THC
	Plasma Torch Anti-collision	Yes, Supplied with
	Plasma dross free thickness	14mm
	Plasma Piercing thickness from middle	22mm
	Plasma cutting from edge thickness	38mm
	Plasma Cutting Speed	105A 12mm 2060mm/min 105A 20mm 940mm/min 105A 32mm 370mm/min

**HUGONG WELDERS**



## CNC CUTTING ACCURACY DESCRIPTION

1	Speed difference to pre-set	Unit	0
2	lengthwise accuracy	mm	$\leq \pm 0.2 \text{ mm} / 10000 \text{ mm}$
3	4 sides accuracy	mm	$\pm 0.5 \text{ mm} / 1000 \text{ mm}$
4	Diagonals accuracy	mm	$\pm 0.5 \text{ mm} / 1000 \text{ mm}$
5	Repeating accuracy	mm	$\pm 0.2 \text{ mm} / 1000 \text{ mm}$
6	Crossover point	mm	$\pm 0.2 \text{ mm} / 1000 \text{ mm}$
7	turning back to start point	mm	$\pm 0.2 \text{ mm} / 1000 \text{ mm}$

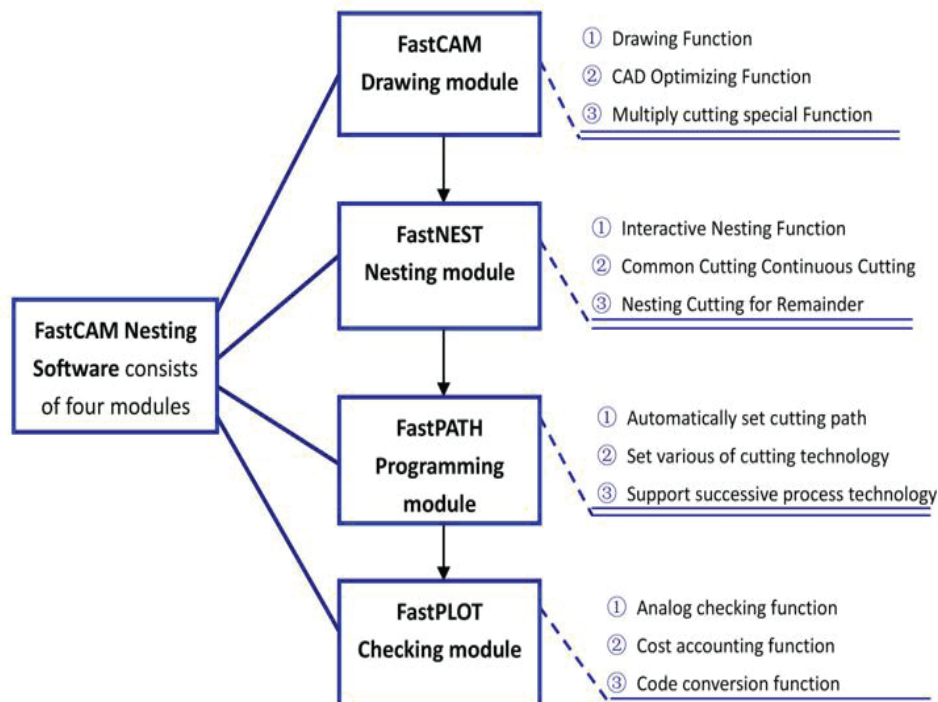


## PROGRAMMING AND NESTING SOFTWARE (FASTCAM)

FastCAM is powerful CADD Plotting Software Specially used for number control cutting and it can Read CAD DXF files and chooses and output the NC Files of different controllers; In addition, it can do speed Cutting obviously, Heighten cutting quality and thus Improve the social and economic benefits.



*The World Standard in Profiling Software*



**HUGONG WELDERS**



## HUGONG STANDARD THC

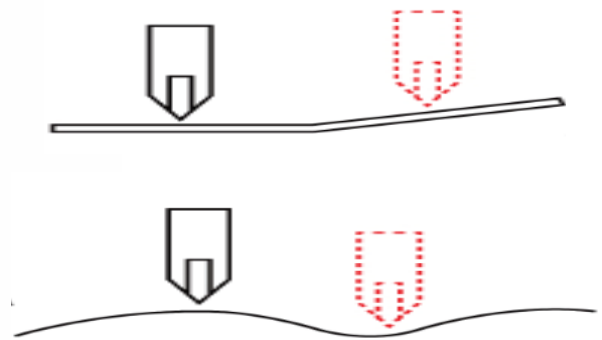
- Power supply: AC24±5%
- Lift motor: DC24V DC Motor
- Drive motor: PWM
- Output current: 1A-4A
- Working temperature: -10-60
- Divided voltage ratio:100:1
- Accuracy: ±1V-±5
- Running transfer: alternative ARC transfer and pierce transfer
- Outer dimension: 310\*270\*95mm



## PLASMA TORCH ANTI-COLLISION SENSOR THC



## THC FUNCTION



## SERVO MOTOR: TO WORK WITH GEAR BOX AS AN ASSEMBLY

- Japan brand product
- Panasonic brand, AC servo motor is used for movement driving.
- AC 450W

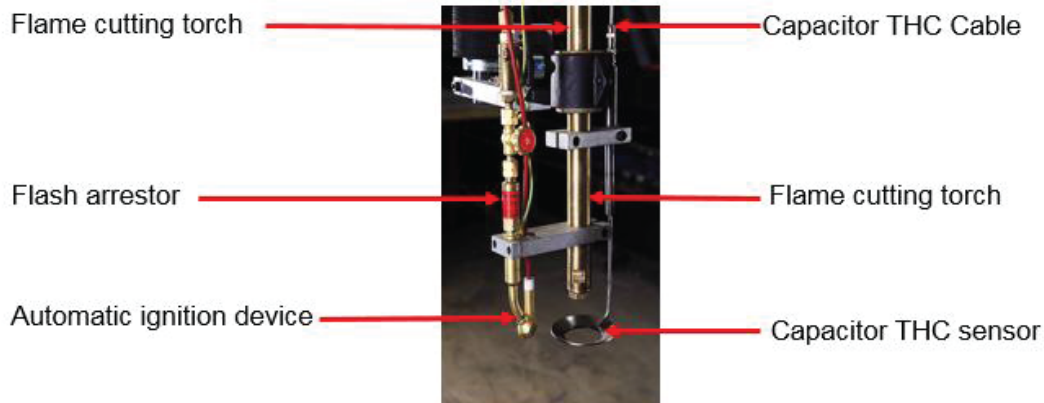


## GEAR BOX: TO WORK WITH SERVO MOTOR AS AN ASSEMBLY

- Germany famous brand
- Rotation ratio: 40:1
- Minimum constant working life: 20,000.00 hours
- Speed: 30,000r/min
- 10 years without problem, no need for maintenance



## FLAME CUTTING ASSEMBLIES:



**HUGONG WELDERS**



1. 1 set of oxy-fuel torch:**AMERICAN BRAND GENTEC TORCH**

GENTEC Torch Handles and Cutting Attachments are machined from high quality forged brass. Torch Handles feature Tube-in-a-Tube design for high handle strength. Cutting Attachments feature a spiral tube mixer design which optimize fuel/oxygen mixture. Stainless steel tubes and lever provide strength and durability. "A" hose fitting, 3/8"-24.

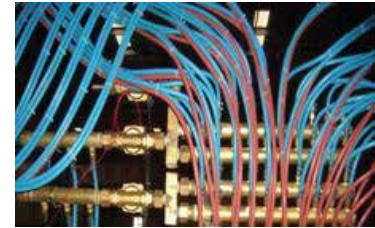
2. Automatic capacitor THC

- Power supply: AC24V±10%,5A
- Sensing height: 2-30mm, 15mm is best
- Accuracy: ±0.2mm
- Motor: DC motor
- THC Working temperature: -10-60°C
- Sensor head working temperature: -10-200°C
- IP 64: dust proof
- IP16 industrial Terminal, 4 core and 6 core



3. 3 sets of gas hose are installed:

- 1 set of Cutting oxygen hose,
- 1 set of preheating oxygen hose,
- 1 set of fuel gas hose



4. 1 set of Auto-ignition:

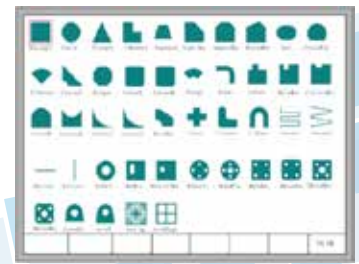
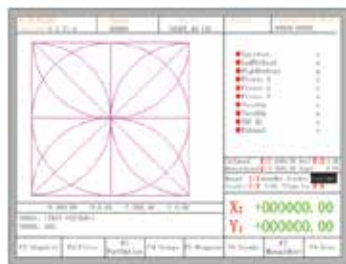
- It consists of ignition torch, ignition signal cable, fuel gas hose and bracket.
- Operator controls ignition by pushing button on controller panel.
- Maximum Space from ignition torch to Gentec torch is 100mm.

5. Flash arrestor to prevent burning back.

- For operator and equipment safety

**HG613 CONTROLLER:**

- A fashionable and separated cabinet
- Cabinet carries HG613 controller and Electrical parts.
- 15 inch, 1024\*768, high definition 16 million colors and high brightness LCD
- 64M SDRAM
- available for user: 256M or 1G electronic hard disk
- USB: USB 1.1 front interface
- full-steel structure which defends electromagnetic radiation, interference and static electricity.
- Parameters backup and online upgrade.
- Chinese/English file system and menu, and the menu can be switched only by one key.
- 45 categories different graphics(including grid pattern), chip part and hole part are alternative.
- Support the EIA code (G code) and various FastCAM, FreeNest, SmartNest, IBESoftwares.
- Compact keyboard design and easy to input files.
- Graphics have some operations such as Proportion, Rotate, Mirror.
- Graphics can be arrayed in matrix, interaction, stacked modes
- All input and output port type and the number can be customized (normally open or normally closed)
- Provide a front USB interface for copying files.



**HUGONG WELDERS**



# Hypertherm® Powermax125®

Professional-grade plasma metal cutting and gouging system for handheld cutting 38 mm and mechanized piercing 25 mm.



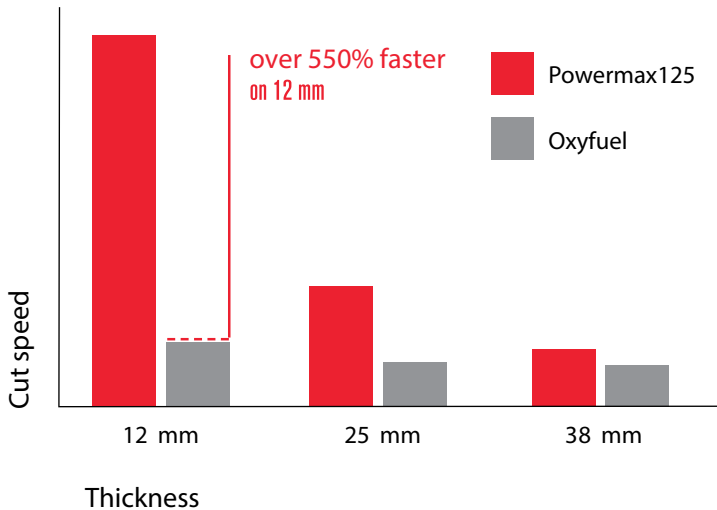
Capacity	Thickness	Cut speed
<b>Cutting</b>		
Recommended	38 mm	457 mm/min
	44 mm	250 mm/min
Severance (hand cutting)	57 mm	125 mm/min
Pierce*	25 mm	

\*Pierce rating for handheld use or with automatic torch height control

Capacity	Metal removal rate	Groove profile*
<b>Gouging</b>		
Typical gouge	12,52 kg/hr	4,3 mm–7,9 mm D x 6,1 mm–9,9 mm W

\*Actual groove profile varies with torch angle, arc stretch, and technique

## Relative cut performance on mild steel



### MAXIMUM PRODUCTIVITY

- Finish jobs faster with cut speeds 5 times greater than oxyfuel on 12 mm mild steel.
- Spend less time on grinding and edge preparation due to superior cut and gouge quality.
- Maximize your cutting time with 100% duty cycle.

### LOW OPERATING COSTS

- Reduce costs with consumable life up to four times longer than other systems in this amperage range.
- Electrode end-of-life detection protects the torch and workpiece from damage by automatically stopping power when the electrode is overused.

### EASY-TO-USE FOR CUTTING AND GOUGING

- No need to change the air pressure. Smart Sense™ technology ensures that it is always correctly set.
- Tackle different jobs with multiple, easy-to-use torch styles.

### BUILT AND TESTED TO WITHSTAND THE HARSHTEST CONDITIONS

- Duramax™ Hyamp torches are designed for high-impact and heat resistance.
- SpringStart™ technology ensures consistent starting and a more reliable torch.
- Low maintenance for maximum uptime.